



**CBS
STUDIO
CENTER™**

Newsletter

Double-O44 (Cents, that is)

By Elayna Rice

Location: Classified.
Mission: Classified.
Agent: Classified.

The mission, if accepted, will test the very core of one's being. It is dangerous, it is possibly even deadly, and there is a chance that only the legend of the mission will remain. It is delivering and picking up the mail for the CBS lot.

It's raining, that's the first obstacle. It comes down like a biblical flood and instead of an ark, there are four open sided golf carts. If this were 1860, the golf carts would be trusty steeds ready to race the mail to its destination, but it isn't and they are not.

This is it. This is the test. All the training, all the preparation comes down to this simple fact; getting the mail to its final destination as dry as possible.

Sorry, jumping ahead. First is the sorting. The mail arrives as an army, barely contained in mail bins that can number as many as four, or even five. Sorting the mail requires a precise set of skills and a little bit of detective work thrown in for good measure. Some psychic ability doesn't hurt either.

Once the mail is sorted according to the mail run, it is then further separated from its comrades and placed in specific shelves in accordance to its final destination. It's dangerous work, fraught with all types of handwriting and the ever present risk of a paper cut. This job is only for the very brave, or the very foolish.

The sorted mail is paper clipped or rubber banded, depending on how much has accumulated. Once they are contained, the captives are transported into a mail bin

to be taken to their final judgment: the desks in the offices.

Back to the rain. There is an even larger force working against the good of all the post, the force of Nature. A debate ensues, just run for it or cover the mail with a garbage bag? The rain picks up. Garbage bag it is. Personal dryness must be forgotten if those letters stand half a chance of being legible ever again.

It sounds like radio static as the rain hits the plastic wrapped mail. One also thinks fondly of home, of the mail room, of any dry and vaguely warm place. Those thoughts must be ignored, for the mail must go out. Darn that United States Postal Service for setting the standard so high. "Neither snow nor rain nor heat nor gloom of night stays these couriers from the swift completion of their appointed rounds." It's a lot to live up to, and the few, the proud CBS Mailroom staff members (let's call them agents) fill those orders well.

The rain lashes through the opens sides of the golf carts, the windshields are nearly impossible to see through and the puddles make a very satisfying sploosh sound as they are driven through. The mail has survived this first journey, now to get it from the golf cart to the building.

The garbage bag has accumulated a puddle over the mail, which usually ends up soaking the sleeves of an agent's shirt as the mail is uncovered. The steadfast agent grabs the bin, takes a breath and runs for the building. The rain falls with unnatural accuracy into the eyes and down the back of the shirt. The doors of the building offer safety, or at least a roof.

The mail is mostly dry. The agent is less than mostly dry. The letters are placed on



Intrepid agent, Elayna Rice

the desks, greetings are exchanged and the agent continues on through the mail run. There are many more letters to deliver, many more stops to make and many more dangers to avoid.

Once back at the Mailroom, agents are accounted for. There have been no major losses this day. The mission has been a success. Most missions are successes, we are well trained.

Then the Fed-Ex guy honks his horn as he pulls in. The boxes need to be delivered and rain has picked up.

Being dry will simply have to be a memory for the time, but how fantastic it will be when the memory becomes reality.

This is the life of an agent, dangerous and filled with adventure.

This file has already said too much. On that note.....

This information will now self destruct. Please stand back.

Studio Services

Carla's Café Commissary	5692
Car Wash	5042
Client Services	5099
Emergency Line	5555
Grip Dept	5711
Hair Salon	6000
Internet Access	5218
Joe's Gym	5099
Lighting	5349
Notary	5837
Parking Signs	5670
Paint Dept.	5396 / 5858
Safety Hotline	6078
Sign Shop	5395
Special Effects	5671
Supply Station	5001
Take 5 Coffee	5979

RECYCLING

Stage and Media	5661
<i>Paint, Solvents, Spray Cans, Rags, Brush Wash, Batteries, Videotape, CDs, DVDs</i>	
Office Recycling	5966
<i>Toner Cartridges, Paper, Cans</i>	
E-Waste Recycling	5396
<i>Anything with a circuit board, ie TVs, Monitors, Recorders, Keyboards, Florescent Lights</i>	

Safety & Security

PLEASE REMEMBER TO...

Drive within the 8 mph speed limit.

Stop at all Stop Signs.

Avoid blocking the roads when parking.

The Security Dept. would like to remind everyone that the Safety Hotline is anonymous and confidential. If you observe an unsafe situation, please report it by calling extension 6078.

Newsletter Staff

Contributing Editor Marsha Gorodkin
Design Elizabeth Gulick

PRODUCTION SCHEDULE



- CSI:NY
(CBS PRODUCTIONS/CBS)
- ENTERTAINMENT TONIGHT
(CBS TV DISTRIBUTION/ CBS)
- THE INSIDER
(CBS TV DISTRIBUTION/CBS)
- ROMANTICALLY CHALLENGED
(WARNER BROS TV/ABC)
- GARY UNMARRIED
(FTP PRODUCTIONS/CBS)
- WOMEN ARE CRAZY, MEN ARE STUPID PILOT
(FTP PRODUCTIONS/ABC)
- FASTER FEATURE
(CBS FILMS)
- FUNNY IN FARSI PILOT
(FTP PRODUCTIONS/ABC)
- ACCIDENTALLY ON PURPOSE
(CBS PRODUCTIONS/CBS)
- HOT IN CLEVELAND PILOT
(HUDSON STREET PRODUCTIONS/TV LAND)
- THE STRIP PILOT
(UNIVERSAL MEDIA STUDIOS/NBC)
- PARKS AND RECREATION
(OPEN 4 BUSINESS/NBC)
- MINUTE TO WIN IT
(NBC STUDIOS INC./NBC)
- GREEK
(ZETA BETA PRODUCTIONS/ABC FAMILY)

JANUARY FEBRUARY

- 1/23 16th Annual Screen Actors Guild Awards
- 1/24 21st Annual Producers Guild Awards
- 2/02 Groundhog Day
- 2/12 Lincoln's Birthday
- 2/14 Valentine's Day & Chinese New Year
- 2/15 Washington's Birthday Observed
- 2/16 Shrove Tuesday (Mardi Gras)
- 2/17 Ash Wednesday
- 2/22 Washington's Birthday
- 2/26 41st Annual NAACP Image Awards
- 2/28 Purim

HOLLYWOOD OVATIONS

36TH ANNUAL PEOPLE'S CHOICE AWARD NOMINATIONS

Favorite TV Comedy Actress
AMY POEHLER
(PARKS AND RECREATION)

Favorite New TV Comedy
ACCIDENTALLY ON PURPOSE

67TH ANNUAL GOLDEN GLOBE AWARD WINNER

Best Performance by an Actress in a Television Series – Musical or Comedy
TONI COLLETTE
UNITED STATES OF TARA

16TH ANNUAL SAG AWARD NOMINATIONS

Outstanding Performance by an Ensemble in a Comedy Series

CURB YOUR ENTHUSIASM

Outstanding Performance by a Male Actor in a Comedy Series

LARRY DAVID

CURB YOUR ENTHUSIASM

Outstanding Performance by a Female Actor in a Comedy Series

CHRISTINA APPEGATE
SAMANTHA WHO?

TONI COLLETTE

UNITED STATES OF TARA

21ST ANNUAL GLAAD MEDIA AWARD NOMINATIONS

Outstanding Comedy Series
GREEK

UNITED STATES OF TARA

Outstanding Individual Episode

"PAWNEE ZOO"

PARKS AND RECREATION

41ST ANNUAL NAACP IMAGE AWARD NOMINATIONS

Outstanding Supporting Actress in a Comedy Series

TISHA CAMPBELL-MARTIN
RITA ROCKS

WENDY RAQUEL ROBINSON
THE GAME

Outstanding Actor in a Drama Series
HILL HARPER – CSI:NY

Outstanding Writing in a Comedy Series
KENNY SMITH

THE GAME "THE WEDDING"



trivia question

Who received two acting Golden Globes in the same year?

ANSWER on page 4

JOE'S GYM

If you are looking to tone up, lose body fat, build muscle, reduce stress, or simply create inner balance through fitness, Joe's Gym is the place for you! The gym is located in the basement of Stage 19 and membership is offered exclusively to CBS Studio Center employees and tenants. Membership applications are available at the Supply Station located near the Colfax Gate.

The Gym is fully equipped from free weights to cardio equipment and includes full locker room amenities. For your convenience Joe's Gym is open 24 hours a day, 7 days a week.

If you would like information regarding how to join Joe's Gym, please call Marsha at x5099.



Special Congratulations



Wasantha Weedagama,
Financial Systems Analyst,
and wife Prashantha
On the birth of your daughter
Rayani Seyara
December 3, 2009

Environmental Tips from

THE GREEN SCENE

SAVE THE DATE – EARTH HOUR

Since 2007, millions of people in countries all around the world have made a bold statement of concern about climate change by doing something quite simple—turning off their lights for one hour—Earth Hour.

Earth Hour was conceived by World Wildlife Fund (WWF) as a way to raise awareness among the general public about climate change and to convey that, by working together, each of us can have a positive impact.

Last year during Earth Hour 2009, nearly one billion people in more than 4,000 cities around the world turned off their lights to demonstrate their commitment and encourage the world to take action on one of the most urgent issues facing our planet.

We know that the amount of energy saved during one hour won't be enough to save our planet from the potentially devastating impacts of climate change, but that misses the true purpose of Earth Hour. Earth Hour seeks to provide a forum in which people can engage on climate issues and seek to find ways in their own lives to become part of the solution to this global threat.

In that spirit, we invite you to take part in Earth Hour 2010. On March 27, 2010 at 8:30 p.m. local time, please join us and millions of others in turning out and taking action.

VISIT EARTHHOUR.ORG

Pulp Art Surfaces wall skins are made to look exactly like real masonry veneer with the same appearance as other dimensional wall skins, improved functionality, environmental sustainability and much more.

CBS STUDIO CENTER
818 655 5804 www.pulpartsurfaces.com

Full Catering Services Available!
Special Sushi Parties - Cocktail Parties - Private Parties
Buffet Style with Dessert Station

AHI SUSHI

Patio
Sake Lounge
www.ahisushi.com

12915 Ventura Blvd. © Coldwater Canyon
Studio City, CA 91604 • 818-981-0277

Drive away with
Peace of Mind

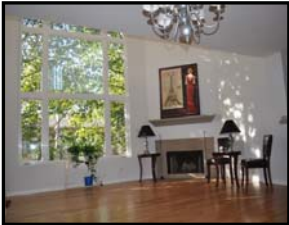
great carma
auto sales & leasing

818.970.3307

Kenneth Roussel

10940 Landale
Toluca Lake, CA 91602
gtrcarma@earthlink.net

**4 BEDROOM CAPE COD
MANHATTAN BEACH – 2 STORY**



20 FT CEILINGS – LIVING ROOM
HARDWOOD FLOORS
LARGE FAMILY ROOM
2 FIREPLACES – 4 CAR PARKING

DAWNA – 310.592.8068
dstromsoe@earthlink.net
\$5,500/mo.

Catering

Delivery
to the lot for individual orders

Take Out

Dining In
we're just moments away

Zach's
ITALIAN CAFE

- Salads
- Pizzas
- Subs
- Pasta
- Chicken Dishes
- Seafood Dishes

10820 Ventura Boulevard
Studio City • 818-762-4225
www.zachscafe.com



PRINTED WITH VEGETABLE INKS ON RECYCLED PAPER CONTAINING A MINIMUM OF 10% POST-CONSUMER RECYCLED CONTENT

3962 LAUREL CANYON BOULEVARD • STUDIO CITY, CALIFORNIA 91604
PHONE [818.509.0003] FAX [818.509.8932]



FULL COLOR PRINTING • HIGH SPEED COPYING
HEADSHOTS • COLOR OUTPUT • GRAPHIC DESIGN
FILM OUTPUT • HEADSHOTS • STAPLING
DIE-CUTTING • MATCHPRINTS • FOIL • LAMINATION
BUSINESS CARDS • LABELS • POSTERS • SCANNING

Mexicali
COCINA • CANTINA

**CBS EMPLOYEES AND TENANTS
ENJOY 30% OFF YOUR CHECK
EVERYDAY 11:30 AM - 4:00 PM**

(PLEASE PRESENT BADGE FOR DISCOUNT)

12161 VENTURA BOULEVARD
STUDIO CITY, CALIFORNIA 91604
818-985-1744

(DOES NOT INCLUDE LOCO LUNCH, ALCOHOLIC BEVERAGES, TAKE-OUT OR ANY OTHER OFFER)

CARLA'S CAFÉ

JCS Catering can handle all of your catering needs

- cast & crew feeds
- wrap parties
- breakfast
- coffee breaks
- screenings
- picnics
- business lunches

Please call 818-655-5692 or stop by Carla's Café to get more information.

To place ads in this publication... please call Marsha, Client Services at (818) 655-5099

	AD SIZES & RATES
Single	2.5" w x 1.5" tall\$50
Double	2.5" w x 3" tall\$100
Triple	2.5" w x 4.5" tall\$150
2xDouble	5.25" w x 3" tall\$200
2xTriple	5.25" w x 4.5" tall\$300

Artwork must be submitted in high res (300dpi) in pdf, psd, eps, tif or jpg.
File correction rates are billed at \$40/hour with a one hour minimum.

salon siné
studio city

10% discount for CBS employees

After 15 years in New York, European-trained stylist Maggie G, has opened her studio in Los Angeles.

Schedule Your Appointment Now:
818.760.9982

professional hair services for men, women and children of all ages
12021 ventura blvd. studio city, ca 91604
next to artisan cheese gallery
www.SalonSinE.com

World Famous
Vitello's Restaurant
EST. 1964
Italian Cuisine

Opera, Jazz or Cabaret Singers perform in one of our private music rooms throughout the week.

Private parties can be held "Upstairs at Vitello's" or in our festive "Green Room" both rooms have large screen TVs available for presentations.

WE DELIVER!

Lunch Hours
7 Days a Week
12:30 am to 4:00 pm

Dinner Hours
7 Days a Week
Sunday thru Thursday
4:00 pm to 10:00 pm
Friday & Saturday
4:00 pm to 11:00 pm

Show your CBS badge and save 15%
(818) 769-0905
www.vitellosrestaurant.com
4349 Tujunga Ave, Studio City

Arts et Fleur

818.730.6750
jojirose@artsetfleur.com

- Event Planning
- Weddings
- Catering
- All Occasions
- Weekly Office & Lobby Installations

trivia answer

Sigourney Weaver won Best Actress for *Gorillas in the Mist* and Best Supporting Actress for *Working Girl* in 1989; Joan Plowright won Best Supporting Actress for *Enchanted April* and *Stalin* in 1993.